

# Columns

## Permanent Street Lighting

Unit 35, Hither Green  
Industrial Estate, Clevedon,  
North Somerset, BS21 6XU

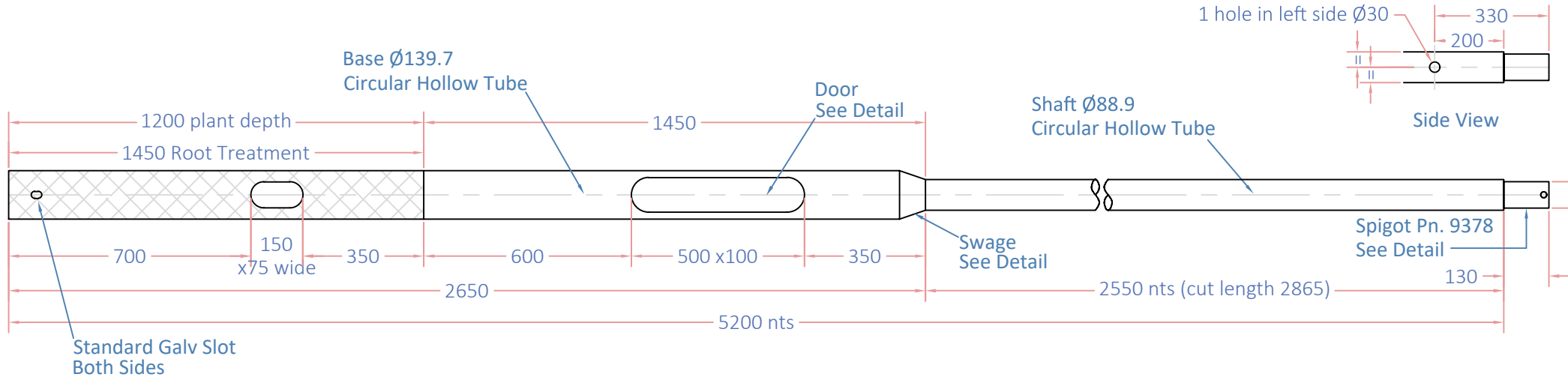
+44 (0) 1275 400570  
info@prolectric.co.uk  
www.prolectric.co.uk

Registered in England & Wales  
Company no. 4607208

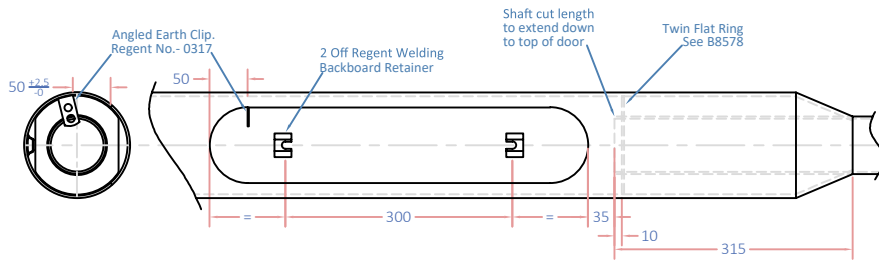
Dimensions Are In mm- Unless Stated

Do Not Scale Drawing- If In Doubt Ask

3rd Angle Projection

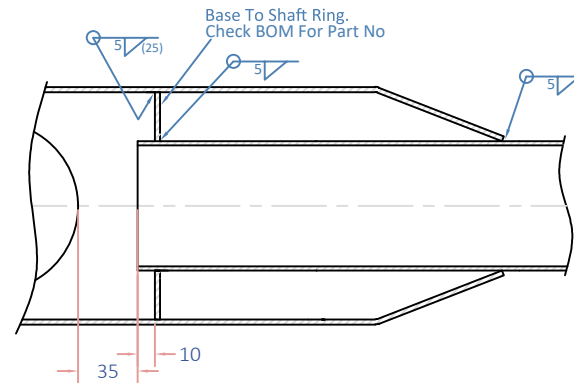


### Door Detail



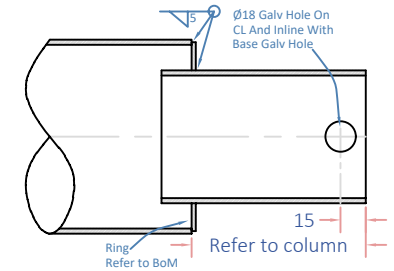
See B7024 For Detail

### Swage Detail



See B7800

### Spigot Detail



Ø76 Post Top Spigot See B6465 For Detail

NOTES:  
Remove All Burrs And Sharp Edges.  
All Welds To BS EN 287 Part 1.  
Hot Dip Galvanise To BS EN 1461.

For Finishing Detail See Works Order



Title:  
4m Post Top Column With Spigot  
Single Solar Panel

Approved:  
--

Drawn:  
DT

Checked:

Date:  
06-12-23

Scale:  
nts @ a4

B 12450

2

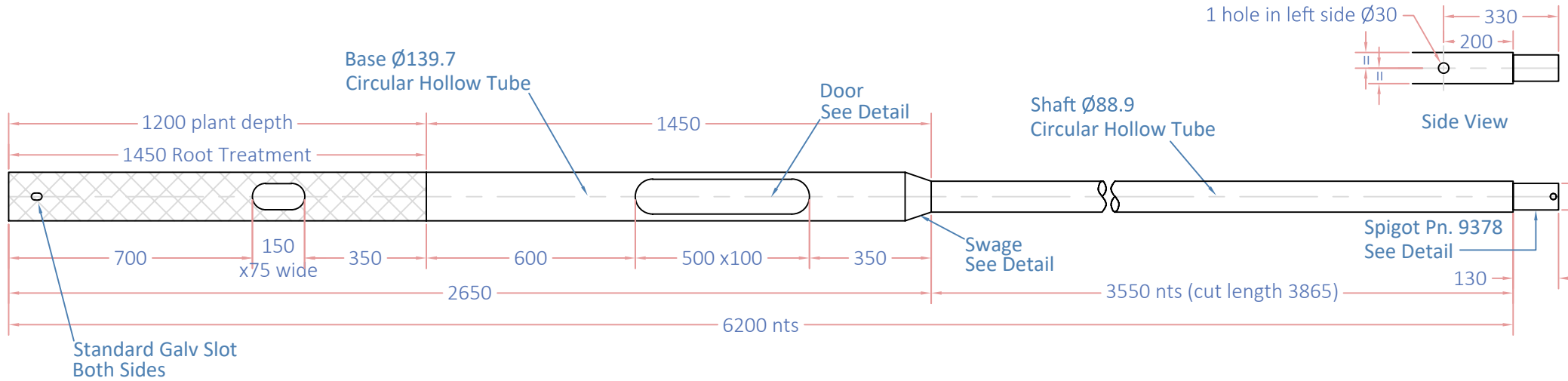
REV 2 - DT - 12.02.24 - Shaft side hole was Ø20

REV 1 Initial Issue

Dimensions Are In mm- Unless Stated

Do Not Scale Drawing- If In Doubt Ask

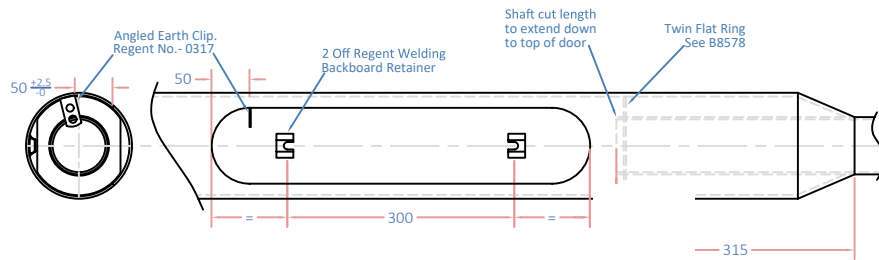
3rd Angle Projection 



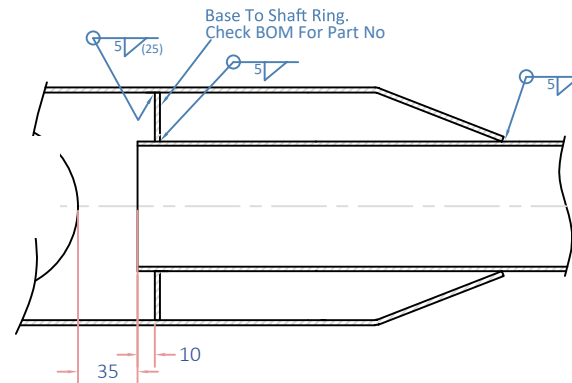
### Door Detail

### Swage Detail

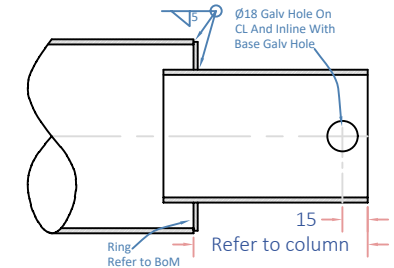
### Spigot Detail



See B7024 For Detail



See B7800



$\varnothing 76$  Post Top Spigot See B6465 For Detail

NOTES:  
Remove All Burrs And Sharp Edges.  
All Welds To BS EN 287 Part 1.  
Hot Dip Galvanise To BS EN 1461.

For Finishing Detail See Works Order

	Title: 5m Post Top Column With Spigot Suitable For 0.89m2 43.2Kg No Sign		Approved: --
	B 12421	2	Drawn: DT
	Customer:		Checked:
		Date: 10-11-23	
		Scale: nts @ a4	

REV 2 - DT - 12.02.24 - Shaft side hole was  $\varnothing 20$

REV 1 Initial Issue

Dimensions Are In mm- Unless Stated

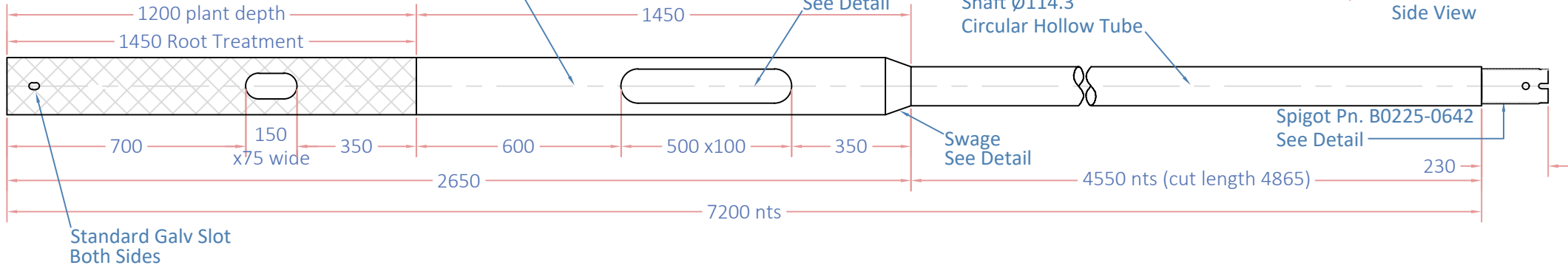
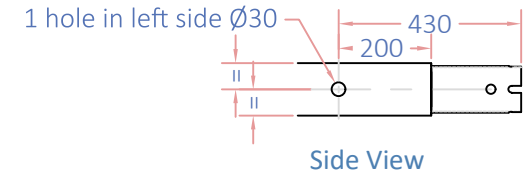
Do Not Scale Drawing- If In Doubt Ask

3rd Angle Projection

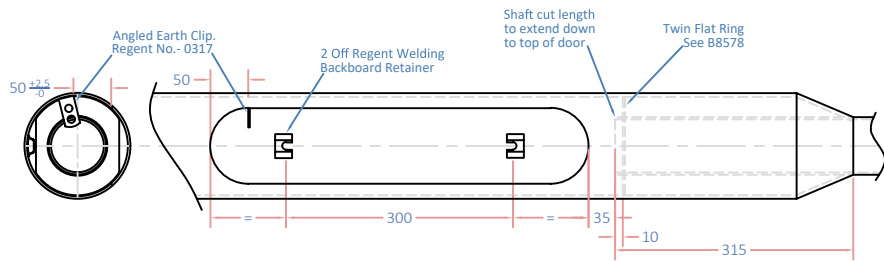
Base  $\varnothing 168.3$   
Circular Hollow Tube

Door  
See Detail

Shaft  $\varnothing 114.3$   
Circular Hollow Tube

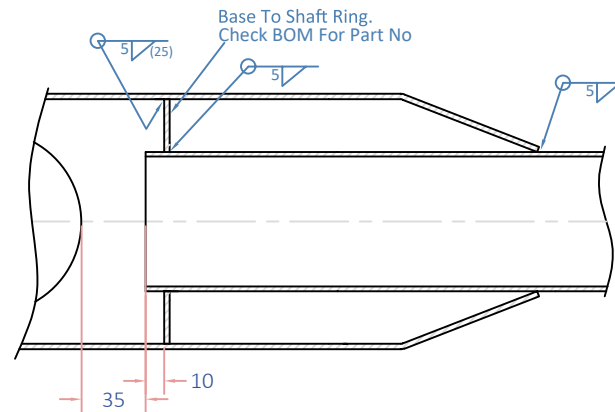


### Door Details



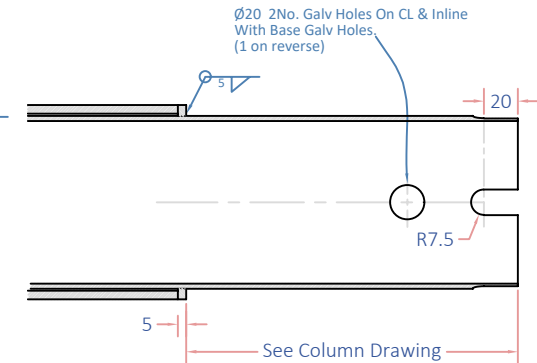
See B7024 For Detail

### wage Detail



See B7800

### Spigot Detail



Spigot Ring  
See B1841

$\varnothing 101$  Spigot  
See B0225-0642  
For Detail

NOTES:  
Remove All Burrs And Sharp Edges.  
All Welds To BS EN 287 Part 1.  
Hot Dip Galvanise To BS EN 1461.

For Finishing Detail See Works Order



Title:  
6m Side Entry Column With Spigot  
Heavy Duty Suitable For  
0.89m<sup>2</sup> 43.2Kg

Approved:  
--

Drawn:  
DT

Checked:

Date:  
30-11-23

B 12447

2

Scale:  
nts @ a4

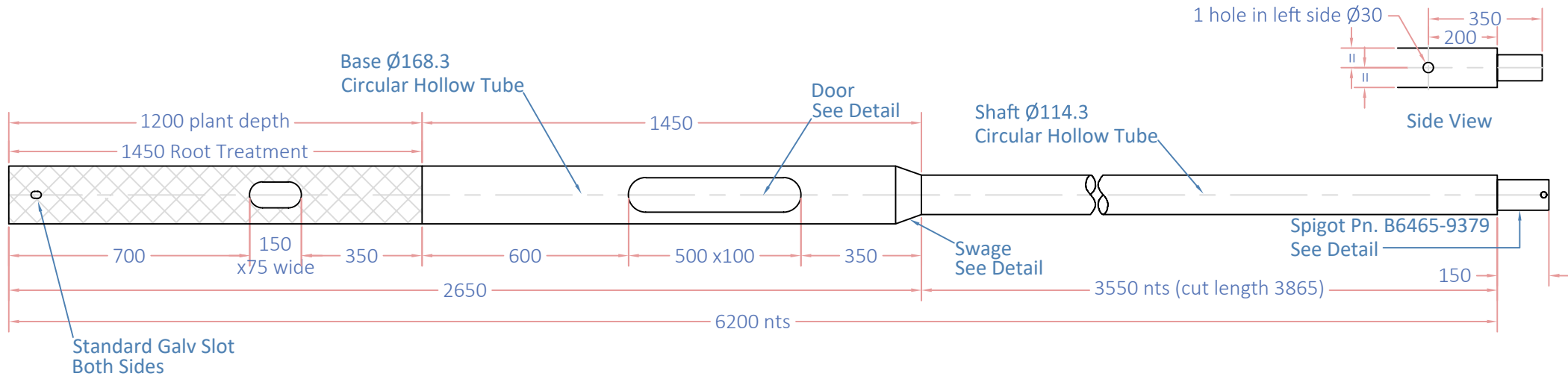
REV 2 - DT - 12.02.24 - Shaft side hole was  $\varnothing 20$

REV 1 Initial Issue

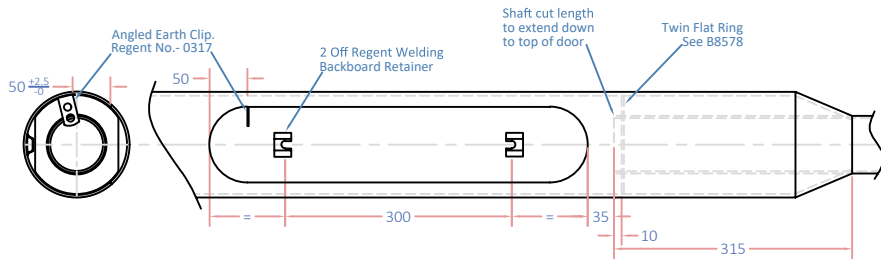
Dimensions Are In mm- Unless Stated

Do Not Scale Drawing- If In Doubt Ask

3rd Angle Projection

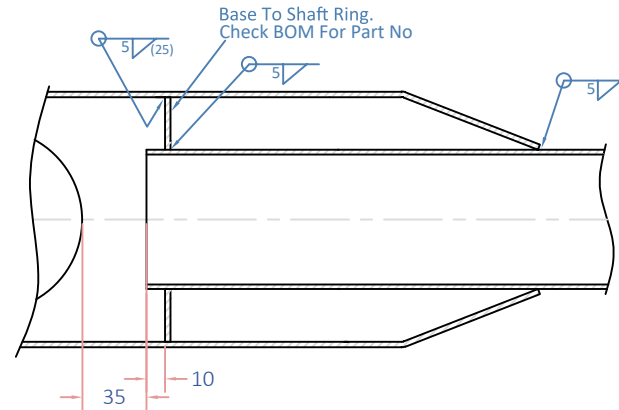


### Door Detail



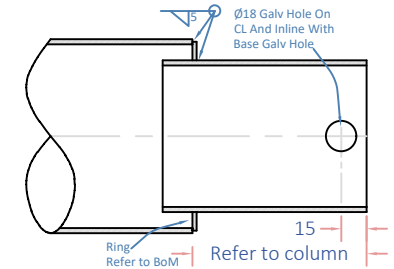
See B7024 For Detail

### Swage Detail



See B7800

### Spigot Detail



$\varnothing 88.9$  Post Top Spigot See B6465-9379 For Detail

### NOTES:

Remove All Burrs And Sharp Edges.  
All Welds To BS EN 287 Part 1.  
Hot Dip Galvanise To BS EN 1461.

For Finishing Detail See Works Order



Title:  
5m Post Top Column With Spigot  
Twin Solar Panel

Approved:

Drawn:  
DT

Checked:

Date:  
06-12-23

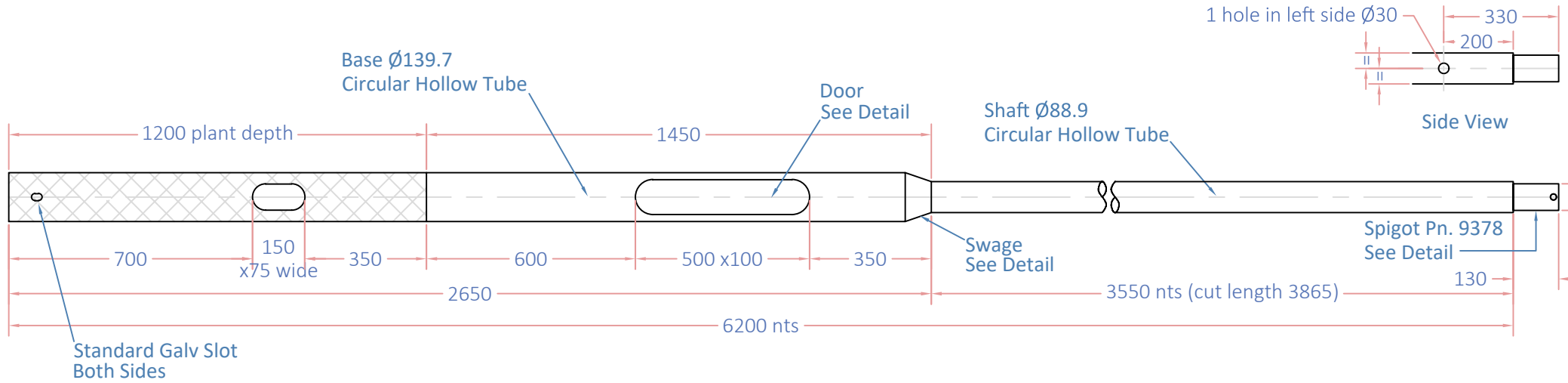
Scale:  
nts @ a4

B 12451

2

REV 2 - DT - 12.02.24 - Shaft side hole was  $\varnothing 20$

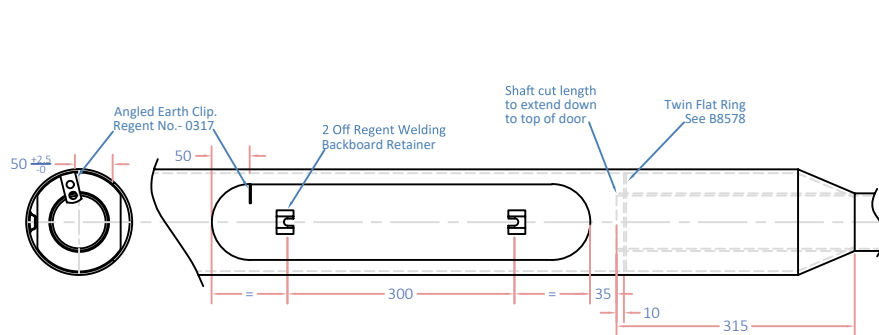
REV 1 Initial Issue



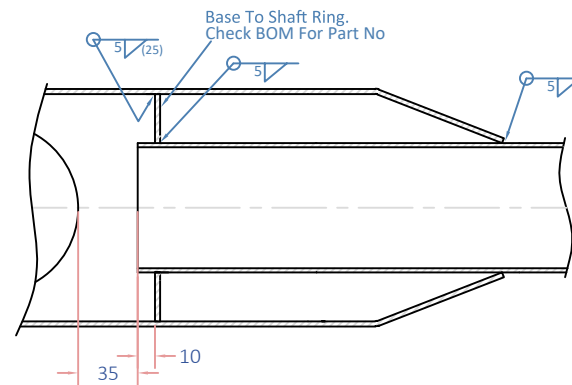
### Door Detail

### Swage Detail

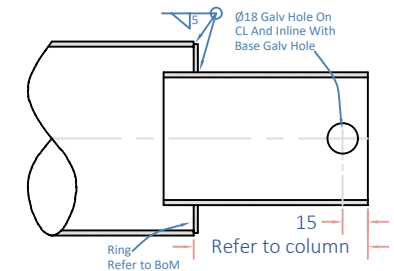
### Spigot Detail



See B7024 For Detail



See B7800



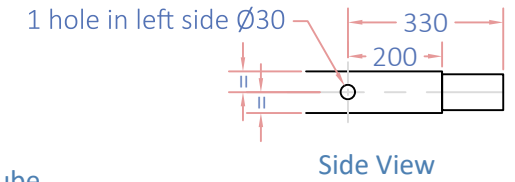
$\varnothing 76$  Post Top Spigot See B6465 For Detail

**NOTES:**  
 Remove All Burrs And Sharp Edges.  
 All Welds To BS EN 287 Part 1.  
 Hot Dip Galvanise To BS EN 1461.  
 For Finishing Detail See Works Order

Dimensions Are In mm- Unless Stated

Do Not Scale Drawing- If In Doubt Ask

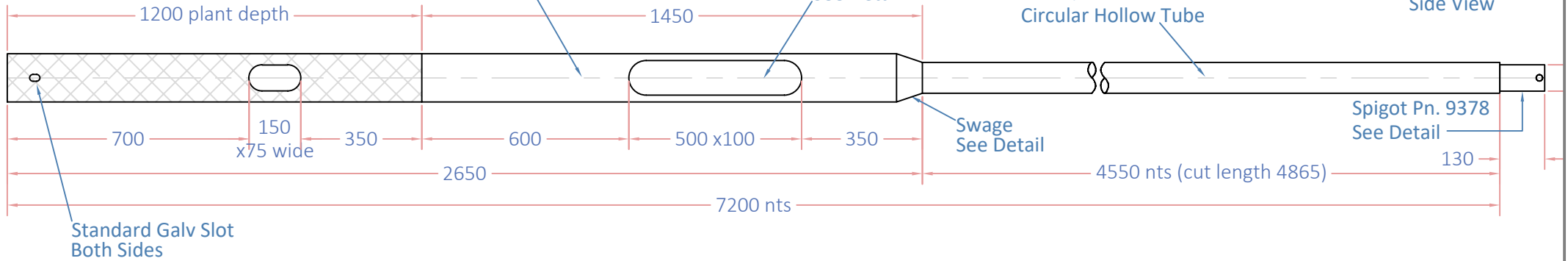
3rd Angle Projection



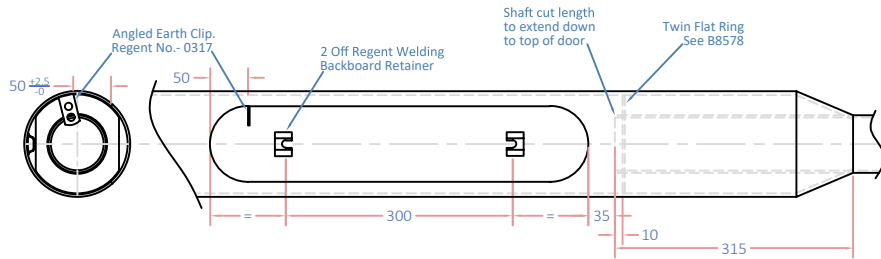
Base  $\text{Ø}139.7$   
Circular Hollow Tube

Door  
See Detail

Shaft  $\text{Ø}88.9$   
Circular Hollow Tube

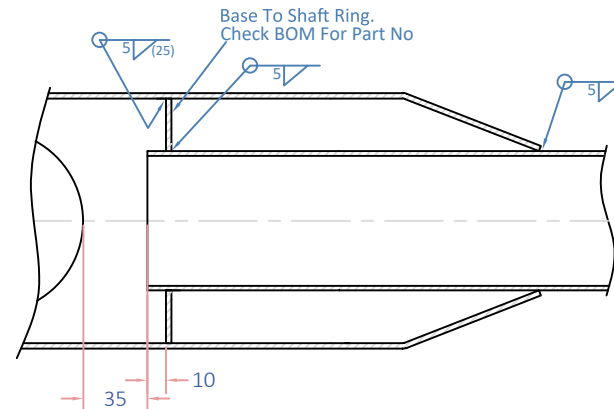


### Door Detail



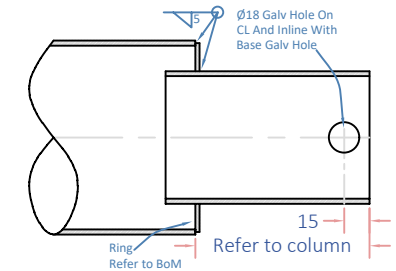
See B7024 For Detail

### Swage Detail



See B7800

### Spigot Detail



$\text{Ø}76$  Post Top Spigot See B6465 For Detail

NOTES:  
Remove All Burrs And Sharp Edges.  
All Welds To BS EN 287 Part 1.  
Hot Dip Galvanise To BS EN 1461.

For Finishing Detail See Works Order



Title:  
6m Post Top Column With Spigot  
AE3-90

Approved:  
--

Drawn:  
DT

Checked:

Date:  
22-12-23

Scale:  
nts @ a4

B 12460

2

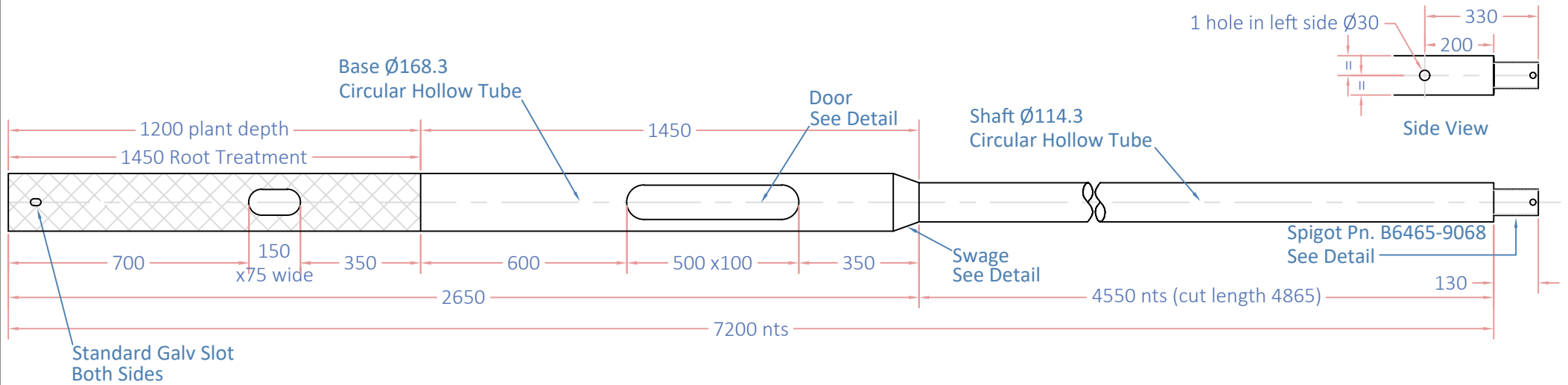
REV 2 - DT - 12.02.24 - Shaft side hole was  $\text{Ø}20$

REV 1 Initial Issue

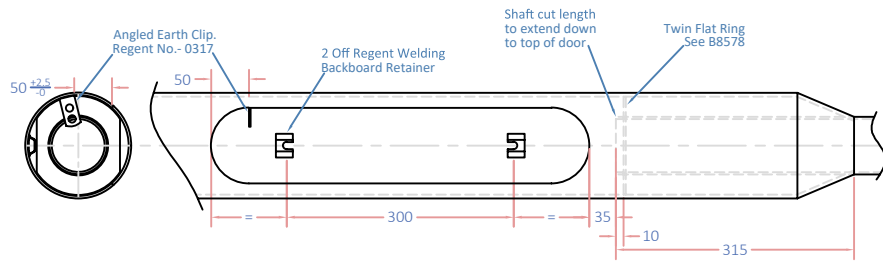
Dimensions Are In mm- Unless Stated

Do Not Scale Drawing- If In Doubt Ask

3rd Angle Projection

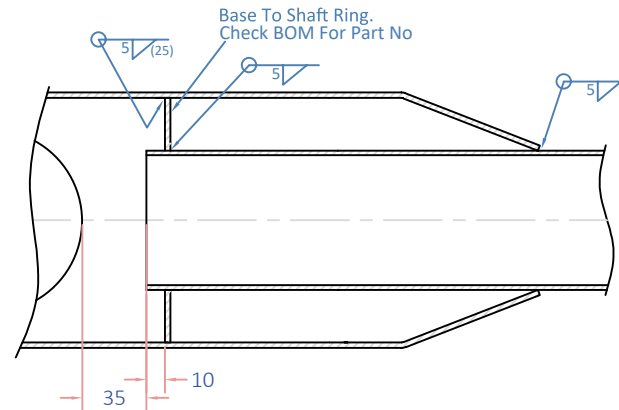


### Door Detail



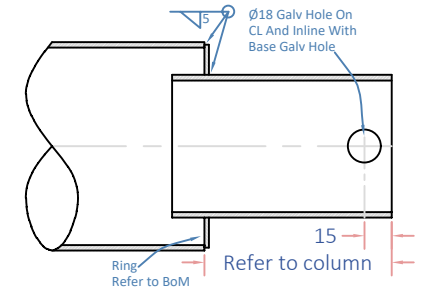
See B7024 For Detail

### Swage Detail



See B7800

### Spigot Detail



Ø76 Post Top Spigot See B6465 For Detail

For Finishing Detail See Works Order

NOTES:  
Remove All Burrs And Sharp Edges.  
All Welds To BS EN 287 Part 1.  
Hot Dip Galvanise To BS EN 1461.



Title:  
6m Post Top Column With Spigot  
Heavy Duty Suitable For  
0.89m<sup>2</sup> 43.2Kg

Approved:  
--

Drawn:  
DT

Checked:

Date:  
08-02-23

B 12469

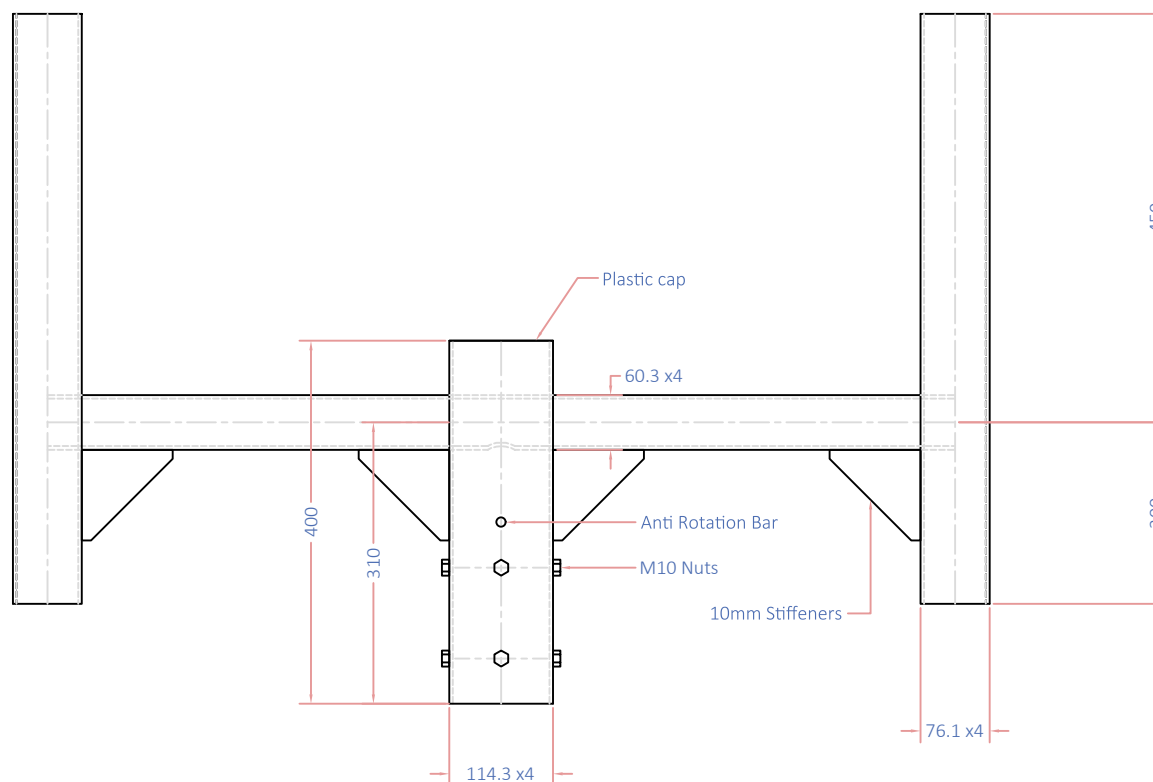
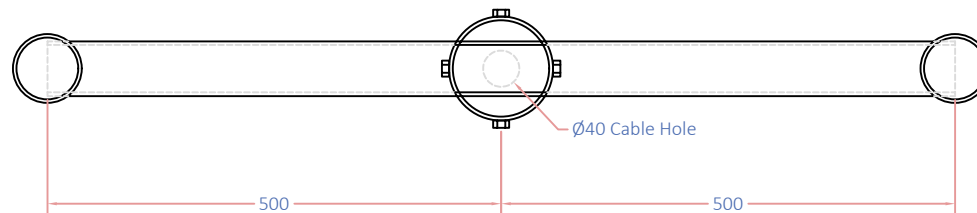
2

Scale:  
nts @ a4

REV 2 - DT - 09.02.24 Shaft hole was Ø20

REV 1 Initial Issue





NOTES:  
 Remove All Burrs And Sharp Edges.  
 All Welds To BS EN 287 Part 1.  
 Hot Dip Galvanise To BS EN 1461.  
 Calculated Mass: 22Kg



Title:  
 Bracket for B12447  
 (6m SE Column With Spigot  
 Twin Solar)

Approved:  
 --

Drawn:  
 DT

Checked:

Date:  
 21.12.23

Customer:  
 Prolectric (Hill and Smith)

Scale:  
 nts @ a4

For Finishing Detail See Works Order

**B** 12458

**1**

REV 2 - DT - 21.12.23 SE Spigot to suit 114 dia Bracket B0741

REV 1 Initial Issue